



2021 STATISTICAL SUMMARY

FIRE INCIDENTS

Structures	44
Vehicles	68
Rubbish	46
Brush/Grass	86
Outside Storage	21
Misc. Property	270

TOTAL 535

ACREAGE BURNED 17,136



The majority of calls, as always, that SBC responded for in 2021 were medical emergencies.

State Responsibility Area (SRA) & Local Responsibility Area (LRA) acres burned 13,852

Federal Responsibility Area (FRA) acres burned 3,284

EMERGENCY MEDICAL INCIDENTS

TOTAL 10,788

OTHER INCIDENTS

Alarm	1,021
Mutual-Aid Provided	751
Haz-Mat	172
Miscellaneous	194

TOTAL INCIDENTS 13,461

FIRE LOSS IN DOLLARS

Property or Structure	\$ 3,050,173
Vehicles & Vehicle Contents	\$ 3,349,661

TOTAL DOLLAR LOSS \$ 6,399,834



2021 STATISTICAL SUMMARY

CURRENT PERSONNEL

Chief Officers	18
Captains	66
Engineer/Inspectors	57
Firefighters	73
Heavy Equipment Operators	4
Operator Assistant	1
Hand Crew Members	35
Fuels Crew Members	13
Administrative Support	28

SPECIALTY POSITION BREAKDOWN

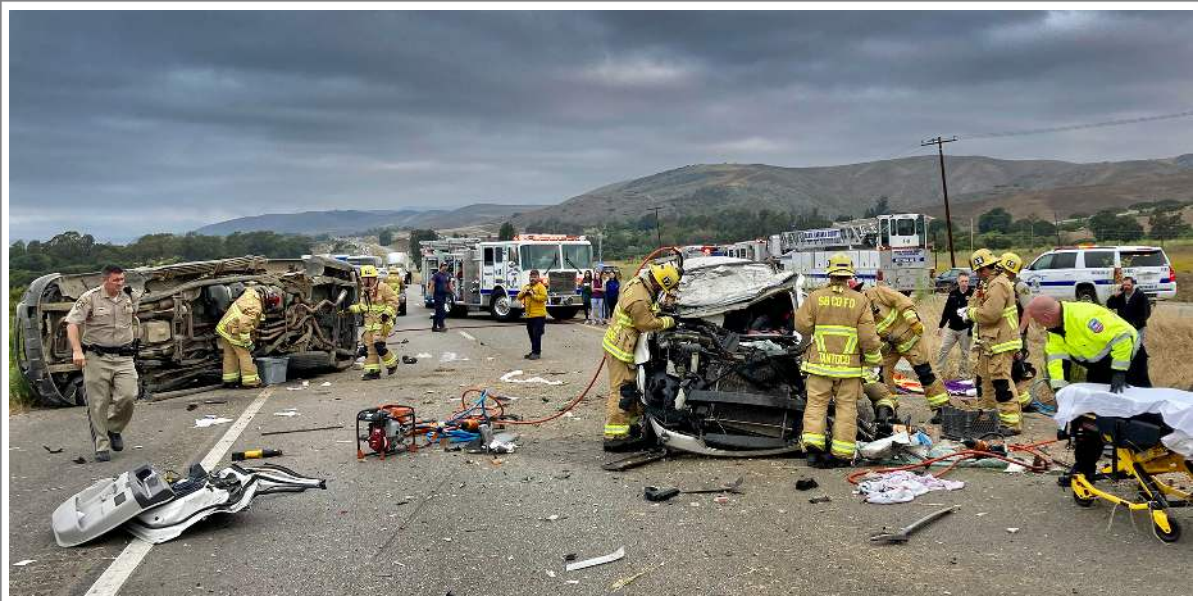
Paramedic Captains	19
Paramedic Engineer/Inspectors	19
Paramedic Firefighters	49
Water Rescue Personnel	34
Haz-Mat Specialists	45
US&R Personnel	64
Helicopter Crew Chief Captains	2
Helicopter Pilots	2
Helicopter Mechanic	1



The Alisal Fire began in the Los Padres National Forest in October and burned 16,970 acres along the Gaviota Coast.



**SANTA BARBARA COUNTY
FIRE DEPARTMENT**



SBC Firefighters on scene of a multi-vehicle accident on Highway 101 north of Goleta.

EMERGENCY OPERATIONS

<u>Battalions</u>	<u>3</u>
<u>Fire Stations</u>	<u>16</u>
<u>Engine Companies</u>	
<u>Type 1</u>	<u>16</u>
<u>Type 3</u>	<u>14</u>
<u>Reserve Engines</u>	<u>8</u>
<u>Truck Companies</u>	<u>2</u>
<u>Rescue Ambulances (RA)</u>	<u>3</u>
<u>Reserve RA</u>	<u>3</u>
<u>Paramedic Engine Co.</u>	<u>13</u>
<u>Medium USAR Unit</u>	<u>1</u>
<u>Haz-Mat Response Unit</u>	<u>1</u>
<u>Water Rescue Unit</u>	<u>2</u>
<u>PWC</u>	<u>4</u>
<u>Foam Tender</u>	<u>1</u>
<u>Water Tenders (WT)</u>	<u>4</u>
<u>Tactical WT</u>	<u>2</u>
<u>Support WT</u>	<u>2</u>
<u>Fuel Tender</u>	<u>1</u>
<u>Air/Light Unit</u>	<u>1</u>
<u>Logistics Support Trailer</u>	<u>1</u>
<u>SxS (UTV)</u>	<u>6</u>

CONSTRUCTION DIVISION

<u>Heavy Equipment Operators</u>	<u>4</u>
<u>Operator Assistant</u>	<u>1</u>
<u>Dozers</u>	<u>4</u>
<u>Transports</u>	<u>4</u>
<u>Excavator</u>	<u>1</u>
<u>Front End Loader</u>	<u>2</u>
<u>Graders</u>	<u>2</u>
<u>Mowers</u>	<u>2</u>

CREW EQUIPMENT

<u>Crew Buggies</u>	<u>3</u>
<u>Chipper</u>	<u>3</u>
<u>Dump Truck</u>	<u>2</u>
<u>Patrol</u>	<u>2</u>

HELICOPTER OPERATIONS

<u>Fire Missions</u>	<u>42</u>
<u>Medical Evacuations</u>	<u>81</u>
<u>Hoist Operations</u>	<u>41</u>
<u>Water Drops</u>	<u>600</u>
<u>Total Water Drops (gallons)</u>	<u>61,000</u>

