



# 2021 STATISTICAL SUMMARY

## FIRE INCIDENTS

Structures	44
Vehicles	68
Rubbish	46
Brush/Grass	86
Outside Storage	21
Misc. Property	270

TOTAL 535

**ACREAGE BURNED 17,136**



The majority of calls, as always, that SBC responded for in 2021 were medical emergencies.

State Responsibility Area (SRA) & Local Responsibility Area (LRA) acres burned 13,852

Federal Responsibility Area (FRA) acres burned 3,284

## EMERGENCY MEDICAL INCIDENTS

TOTAL 10,788

## OTHER INCIDENTS

Alarm	1,021
Mutual-Aid Provided	751
Haz-Mat	172
Miscellaneous	194

**TOTAL INCIDENTS 13,461**

## FIRE LOSS IN DOLLARS

Property or Structure	\$ 3,050,173
Vehicles & Vehicle Contents	\$ 3,349,661

TOTAL DOLLAR LOSS \$ 6,399,834



# 2021 STATISTICAL SUMMARY

## CURRENT PERSONNEL

Chief Officers	18
Captains	66
Engineer/Inspectors	57
Firefighters	73
Heavy Equipment Operators	4
Operator Assistant	1
Hand Crew Members	35
Fuels Crew Members	13
Administrative Support	28

## SPECIALTY POSITION BREAKDOWN

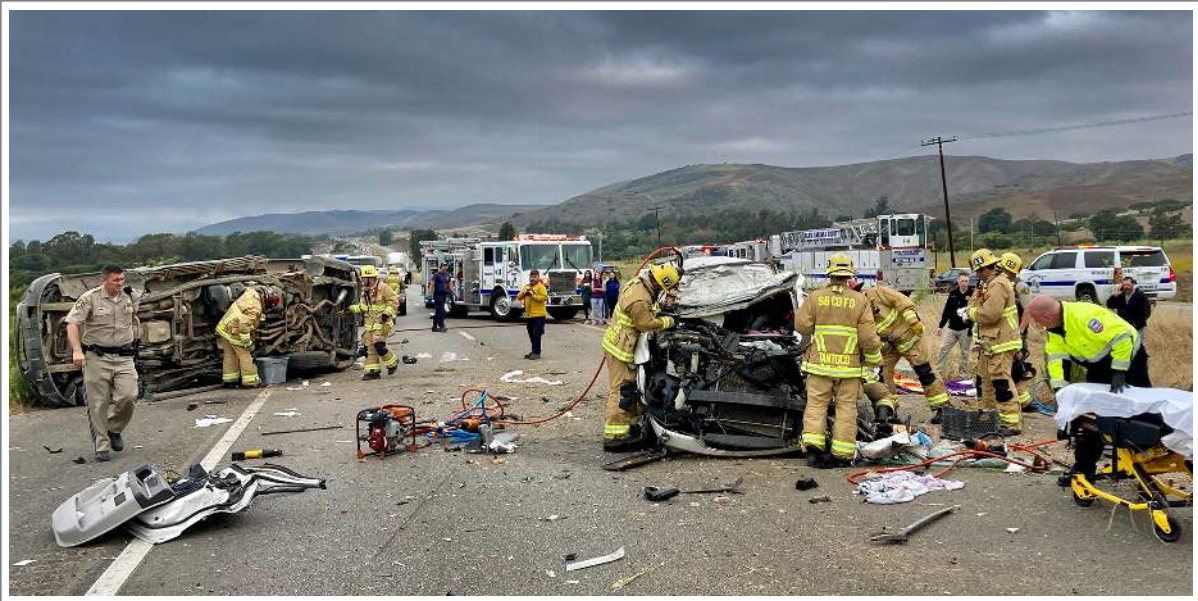
Paramedic Captains	19
Paramedic Engineer/Inspectors	19
Paramedic Firefighters	49
Water Rescue Personnel	34
Haz-Mat Specialists	45
US&R Personnel	64
Helicopter Crew Chief Captains	2
Helicopter Pilots	2
Helicopter Mechanic	1



The Alisal Fire began in the Los Padres National Forest in October and burned 16,970 acres along the Gaviota Coast.



**SANTA BARBARA COUNTY  
FIRE DEPARTMENT**



SBC Firefighters on scene of a multi-vehicle accident on Highway 101 north of Goleta.

## EMERGENCY OPERATIONS

<u>Battalions</u>	<u>3</u>
<u>Fire Stations</u>	<u>16</u>
<u>Engine Companies</u>	
<u>Type 1</u>	<u>16</u>
<u>Type 3</u>	<u>14</u>
<u>Reserve Engines</u>	<u>8</u>
<u>Truck Companies</u>	<u>2</u>
<u>Rescue Ambulances (RA)</u>	<u>3</u>
<u>Reserve RA</u>	<u>3</u>
<u>Paramedic Engine Co.</u>	<u>13</u>
<u>Medium USAR Unit</u>	<u>1</u>
<u>Haz-Mat Response Unit</u>	<u>1</u>
<u>Water Rescue Unit</u>	<u>2</u>
<u>PWC</u>	<u>4</u>
<u>Foam Tender</u>	<u>1</u>
<u>Water Tenders (WT)</u>	<u>4</u>
<u>Tactical WT</u>	<u>2</u>
<u>Support WT</u>	<u>2</u>
<u>Fuel Tender</u>	<u>1</u>
<u>Air/Light Unit</u>	<u>1</u>
<u>Logistics Support Trailer</u>	<u>1</u>
<u>SxS (UTV)</u>	<u>6</u>

## CONSTRUCTION DIVISION

<u>Heavy Equipment Operators</u>	<u>4</u>
<u>Operator Assistant</u>	<u>1</u>
<u>Dozers</u>	<u>4</u>
<u>Transports</u>	<u>4</u>
<u>Excavator</u>	<u>1</u>
<u>Front End Loader</u>	<u>2</u>
<u>Graders</u>	<u>2</u>
<u>Mowers</u>	<u>2</u>

## CREW EQUIPMENT

<u>Crew Buggies</u>	<u>3</u>
<u>Chipper</u>	<u>3</u>
<u>Dump Truck</u>	<u>2</u>
<u>Patrol</u>	<u>2</u>

## HELICOPTER OPERATIONS

<u>Fire Missions</u>	<u>42</u>
<u>Medical Evacuations</u>	<u>81</u>
<u>Hoist Operations</u>	<u>41</u>
<u>Water Drops</u>	<u>600</u>
<u>Total Water Drops (gallons)</u>	<u>61,000</u>

